

 **VERSATILE**

4WD TRACTORS » 425-520-570-620 hp





Each farm has specific operating conditions and implement demands. Versatile four-wheel drive tractors offer the choice of manual or powershift transmissions in most models, each developed to efficiently manage field demands and engine horsepower. Choose the best transmission for convenience and performance.

## ENGINE & TRANSMISSION OVERVIEW

- » Large displacement Cummins QSM11 and QSX15 engines
- » CAT® 16-speed powershift transmissions available in all models
- » Programmable for auto-shifting and speed matching



**NO EGR**



## COMMON COMPONENTS

- Assembled using commercially available components from industry-leading companies.
- The use of quality components limits the risk of down time.
- Individual systems and operations mean the tractor is more serviceable, reducing downtime and repair costs.



**QSM11**

**VERSATILE 425**

The Cummins QSM11 powers the 425 model. The 11-litre in-line six-cylinder turbocharged engine delivers superior performance using advanced combustion technology. The turbocharger is designed for optimum boost to improve throttle response across the operating range. Electronically controlled unit injectors with cam-driven rate shaping optimise both emissions and efficiency. The mix of proven field performance and advanced technology is designed to be durable and reliable.



**QSX15**

**VERSATILE 520-620**

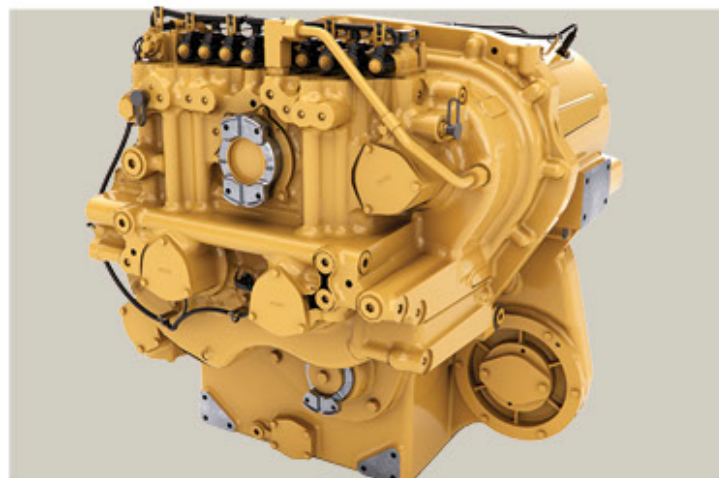
The HHT Series (520 - 620 hp) is powered by the dependable Cummins QSX 15-litre six-cylinder turbocharged engine. Versatile selected the Cummins QSX15 during the development of the HHT Series to optimise the performance of the tractor, shaping power curves and ratings to align with work environment, load factors and operating modes. The result is an efficient and reliable high horsepower tractor that will work hard for years to come.

**CAT** TRANSMISSION

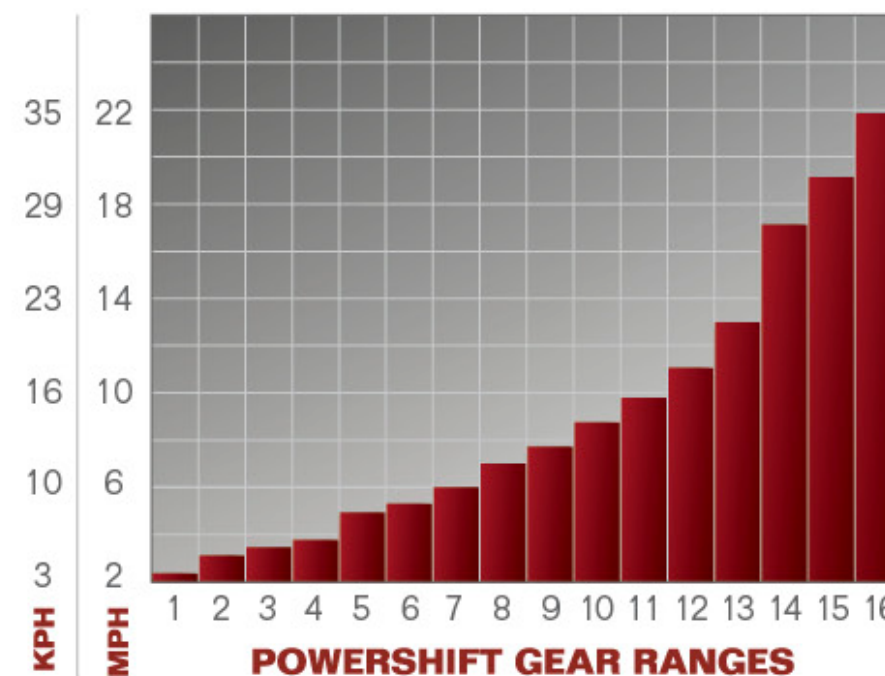
The entire line of Versatile four-wheel drive tractors now feature 16 x 4 CAT® powershift transmissions. The 425 model uses the TA19 and the Versatile 520 and 620 feature the TA22. The smooth shifting dependable CAT® transmissions offer 40 km/hr (25 mph) road speeds and a large selection of working range gears for every application. Both transmissions are programmable for auto-shifting and speed matching.



**TA19**



**TA22**



The powershift transmissions are designed for maximum power and torque with speed variability within field working range. Because moving to the next field takes valuable time, up to 40 km/hr (25 mph) road speed is available.



The closed center load sensing hydraulic system provides ample capacity for implements that demand high hydraulic flow by providing pressure and flow on demand. When no hydraulic power is required, the system goes into low-pressure standby to conserve energy, providing more power at the drawbar.

## HYDRAULIC OVERVIEW

- » Electro-hydraulics
- » Standard Flow of 208 L/min
- » Optional High Flow of 428 L/min with split valve functionality
- » Increased reservoir capacity
- » Reservoir sight glass

## ELECTRO-HYDRAULICS

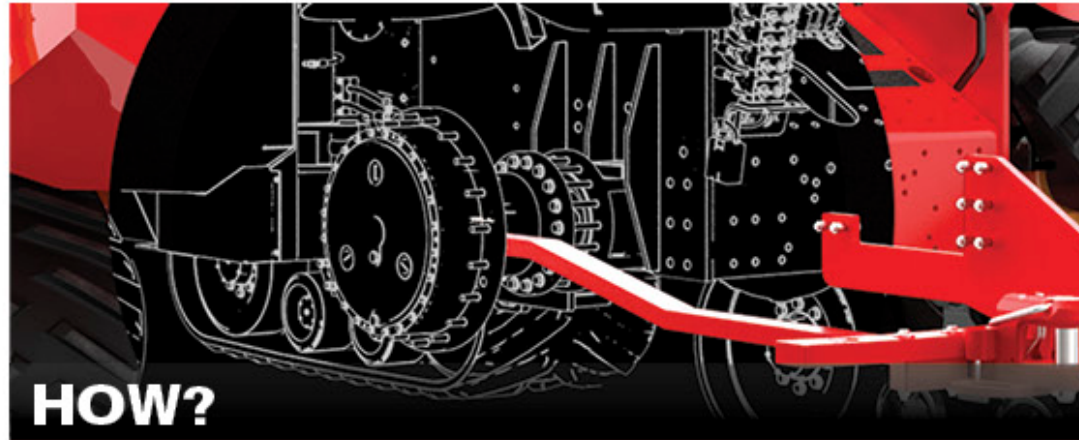
Electro-hydraulics, available on all models, are ergonomically designed for both comfort and convenience. Finger-tip controls manage the hydraulic functions and hydraulic flow is increased and decreased using the EHR monitor.



## HYDRAULIC FLOW

A total hydraulic flow of 208 L/min is standard, or 428 L/min with the optional high flow hydraulic system. Four remote valves are standard, six optional.

# UP TO 15% MORE DRAWBAR PULL



## HOW?

- Well ballasted tractor design
- Powertrain designed for efficient engine-to-ground power transfer
- CAT V drawbar has a 6804 kg vertical load capacity
- Drawbar pull from the center of the tractor maximises the transfer of power to the ground
- Torque optimisation
- Outboard planetaries

## RESULTS

- More power to the drawbar
- More power to the ground
- Better fuel efficiency

## DRAWBAR

The drawbar pull point on Versatile four-wheel drives is immediately behind the articulation point, which features a large-diameter pivot pin for maximum strength and durability.

## 3-POINT HITCH

A 3-point hitch is available on all Versatile 4WD tractors. Models 425 feature a Category III wide / IV Narrow hitch and a Category IV 3-point hitch is standard on models 520 and 620.

## PTO

PTO output with a 44 mm (1-3/4") shaft, 1000 RPM, is available as an option for all Versatile 4WD tractors.



## DRAWBAR

The standard drawbar can move from side to side or be locked in place.



## HD DRAWBAR SUPPORT

The optional fixed heavy-duty drawbar increases static load capacity for implements such as grain carts, silage trailers & manure wagons.



## PIVOT PIN & OSCILLATION

The 425 features a 60 mm (2.36") pivot pin while models 520 and 620 have a 80 mm (3.15") pivot pin. Oscillation +/-12° allowing the tractor to move over uneven terrain.



## SERVICING

The articulation area is kept as open as possible to provide easy service access to the drivelines and the transmission.

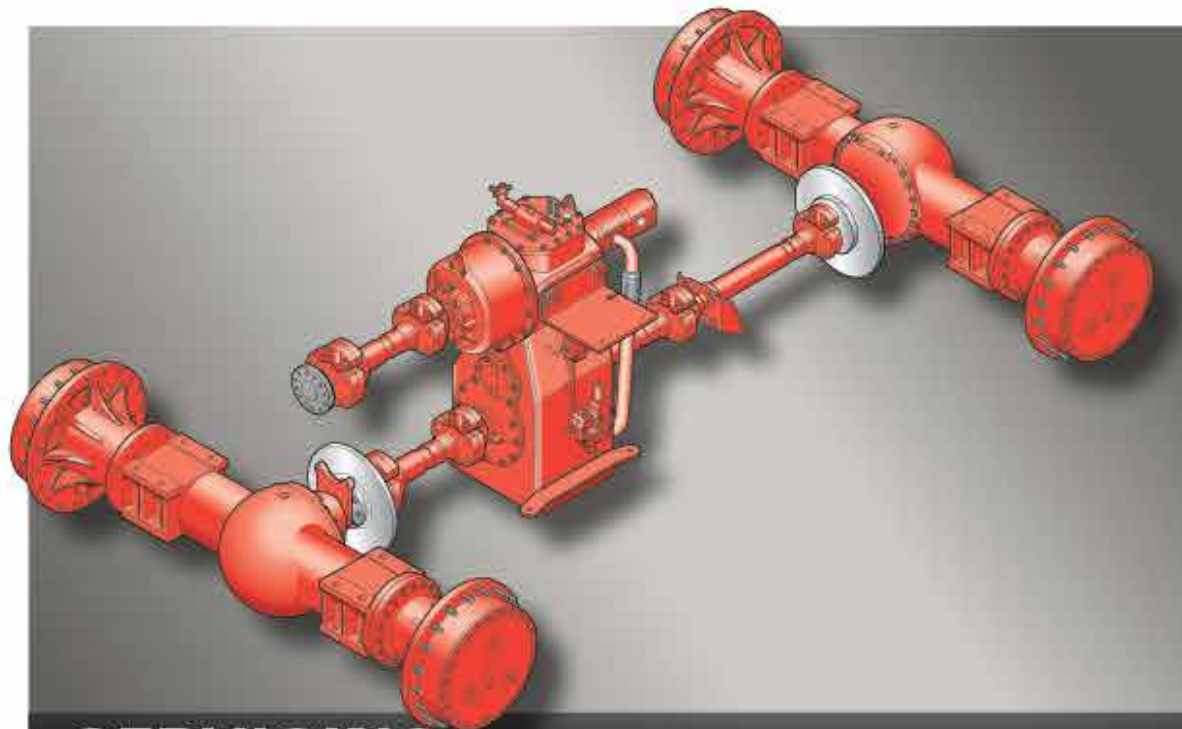
## OUTBOARD PLANETARIES

In the 1970's, Versatile engineers developed the outboard single reduction planetary axle, known in the industry for its strength, simplicity, ease of service and wheel mounting. The tradition of building the most reliable planetary combination in the industry starts with placing the planetary and sun gears towards the outside of the axle. Outboard planetary axles deliver all available horsepower through a large, precision machined floating sun gear. The planetary hubs are suspended on large diameter bearings mounted directly to the axle tubes. The load is supported by the axle housing assembly and not by the drive train components. All Versatile 4WD tractors feature reliable final drives that deliver horsepower where it counts: at the drawbar.



### HEAVY-DUTY PLANETARY FINAL DRIVE

All models feature a large, reliable heavy-duty planetary final drive to provide long service with heavily ballasted tractors and big implements. Large bearings support the planetary hubs on the axle housings. They are built with large axle tubes and planetaries capable of standing up to heavy weights and capable of handling increased bending loads associated with wide dual or triple wheel options.



### SERVICING

The planetary axles remain on the tractor during routine maintenance, limiting downtime. Daily inspections are easy with a quick visual check of the axle oil level indicators. The gears can also be reversed to double the wear life.



### FINAL DRIVES

The final drive mounts to the end of the axle housing. Drive shafts and planetaries can be serviced without removing the axle assembly from the tractor.



### AXLE HOUSINGS

Heavy-duty axle housings carry the tractor load, not the axle assembly. This enhances the axle life because the weight is evenly distributed.



### WEIGHTS

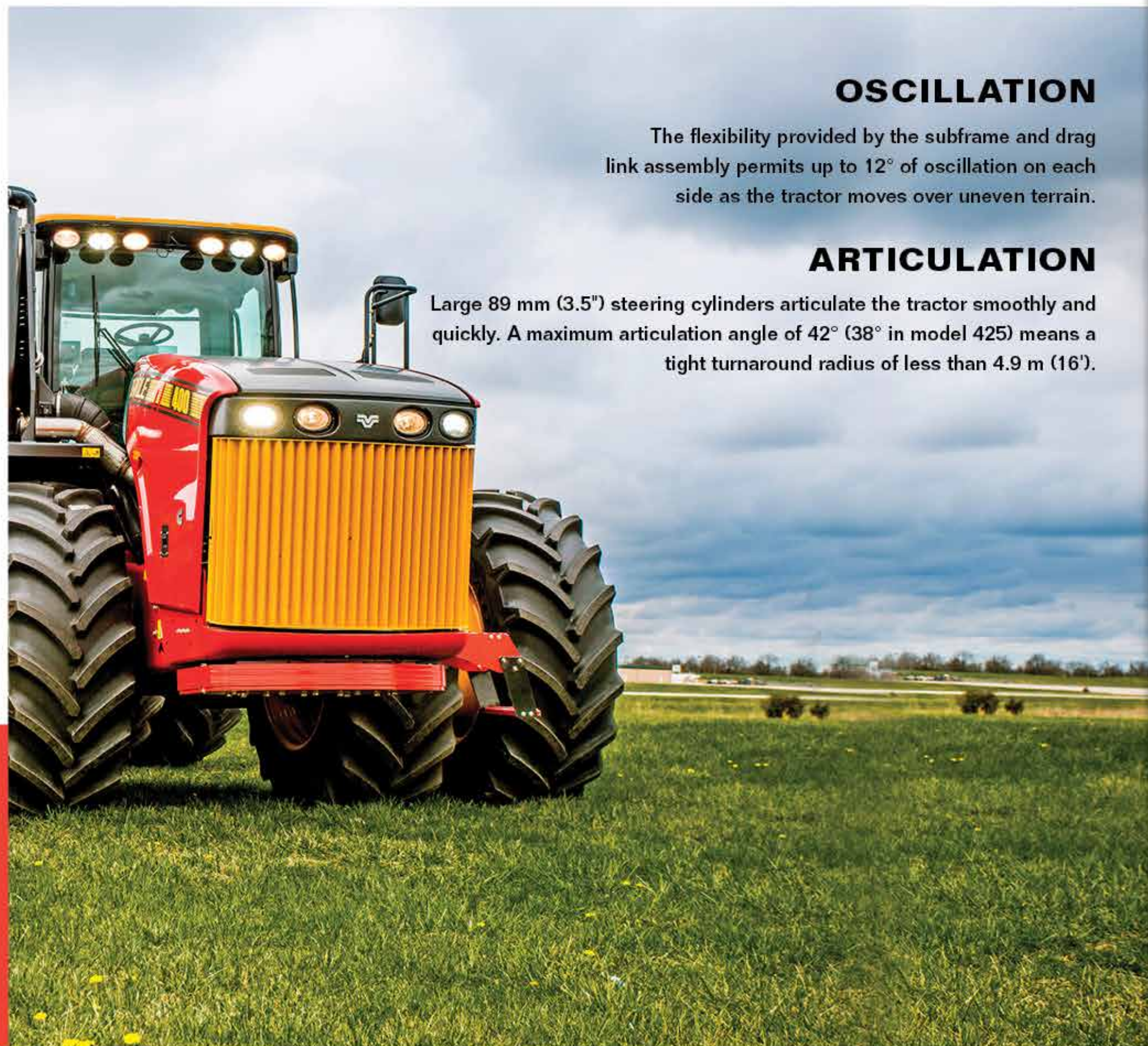
The front weight system has been replaced with an under-mount weight systems to increase visibility reduce shedding length and allow for easier service access.

## FRAME CONSTRUCTION

The frame is manufactured from thick high-grade steel plate to ensure structural integrity even under extreme conditions. The main bearing at the articulation point is larger than prior models to enhance reliability. The drawbar pull point on Versatile four-wheel drives is immediately behind the articulation point which provides maximum pulling power when making tight turns in the field.

## FUEL CAPACITY AND WEIGHT DISTRIBUTION

Two fuel tanks provide a total capacity of 1135 L in the 425, while models 520 and 620 have a capacity of 1514 L. The two fuel tanks are connected with a crossover tube for convenient refueling on either side of the tractor. The tanks are located at the optimum position near the center of the tractor to maintain the front-to-rear weight distribution. As the fuel level drops, the front-to-rear weight ratio remains the same so balance and ballast levels are not affected, regardless of fuel level.



## OSCILLATION

The flexibility provided by the subframe and drag link assembly permits up to 12° of oscillation on each side as the tractor moves over uneven terrain.

## ARTICULATION

Large 89 mm (3.5") steering cylinders articulate the tractor smoothly and quickly. A maximum articulation angle of 42° (38° in model 425) means a tight turnaround radius of less than 4.9 m (16').



## FENDERS

Fenders offer increased clearance for larger tyres. An increased tyre selection allows Versatile 4WDs to be more application specific.



## CAB OVERVIEW

- » 4.97 cu. m (175.5 cu. ft.) of volume
- » 7.98 sq. m (85.9 sq. ft.) of window glass area
- » Improved training seat
- » Integrated Control Console
- » Multi-directional vents

## IMPROVED DELUXE CAB

The Versatile cab is the largest in the industry. Improved comfort and ergonomics are designed for long days in the field.

The Deluxe Cab includes a heated, semi-active suspension seat as well as a training seat. An under seat storage compartment helps keep the cab organised.

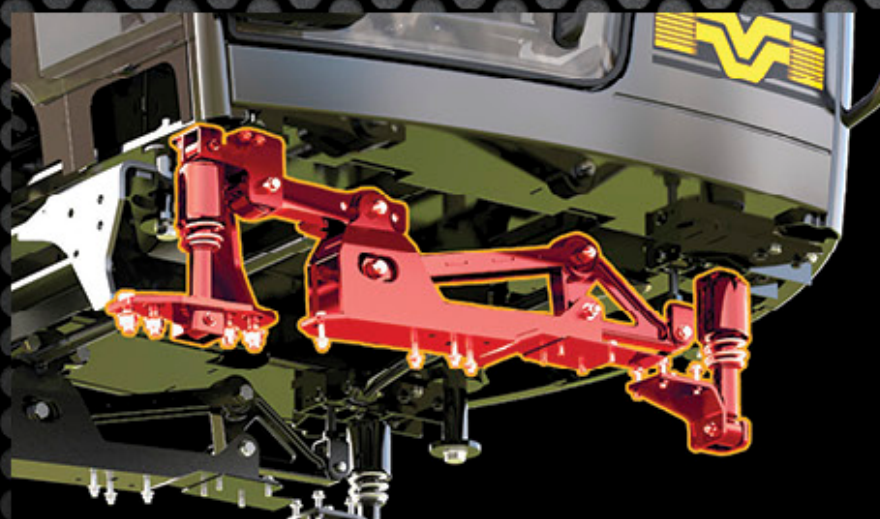






## UNIVERSAL AUTO-STEER

- Universal auto-steer allows for integration to almost any farming system, saving time and money when adding a new Versatile to the fleet
- Plug and play intergration with any system you choose
- Raven hydraulic valve and wheel angle sensor included



## CAB SUSPENSION

The suspended cab is raised onto the four point shock and spring system. It works in tandem with the tuned torque arms that reduce or eliminate pitch and roll movement. This gives the operator a smooth and comfortable ride.

## IMPROVED STANDARD CAB OFFERING

The 4WD takes advantage of the class leading Versatile HQ Cab. With over 85 sq. ft. of viewable window glass the HQ Cab provides a panoramic view of your fields. A seat mounted right-hand console gives you fingertip control over the entire tractor to help reduce operator fatigue. A semi-active air-ride suspension seat is standard and the HQ Cab also offers a large training seat.

## DELUXE CAB

The new Deluxe Cab is a high-end full-featured cab that provides the operator with every imaginable comfort for long working days. A semi-active air-ride suspension seat and the training seat are both standard in this configuration.

In addition to the connectivity options available in the standard cab, the Deluxe Cab has an 110v AC power outlet and a 5-volt integrated USB port. A subwoofer is also standard to improve sound quality in the cab.

## VENTS

Large multi-directional vents optimise comfort and help create an ideal cab environment.

## RADIO

A conveniently located stereo and high quality sound system help make long days in the cab more enjoyable.

## CONVENIENCE

Four cup holders are standard. The cab also has coat hooks to keep the cab clean and organised.

## OPERATOR SEAT

The operator seat has a 104° swivel range to maximise visibility when towing implements. Air-ride suspension and a heated seat are standard in the Deluxe Cab.



## DASH CONSOLE



The redesigned dash console is narrower than previous versions to increase forward visibility. The steering console has standard tilt and telescopic operation to provide additional operator comfort. A newly designed dash display simplifies information for improved readability.



### WORK LIGHTS

For low-light working conditions, Versatile tractors are equipped with fourteen standard worklights mounted on the grille, front fenders, rear fenders and cab.

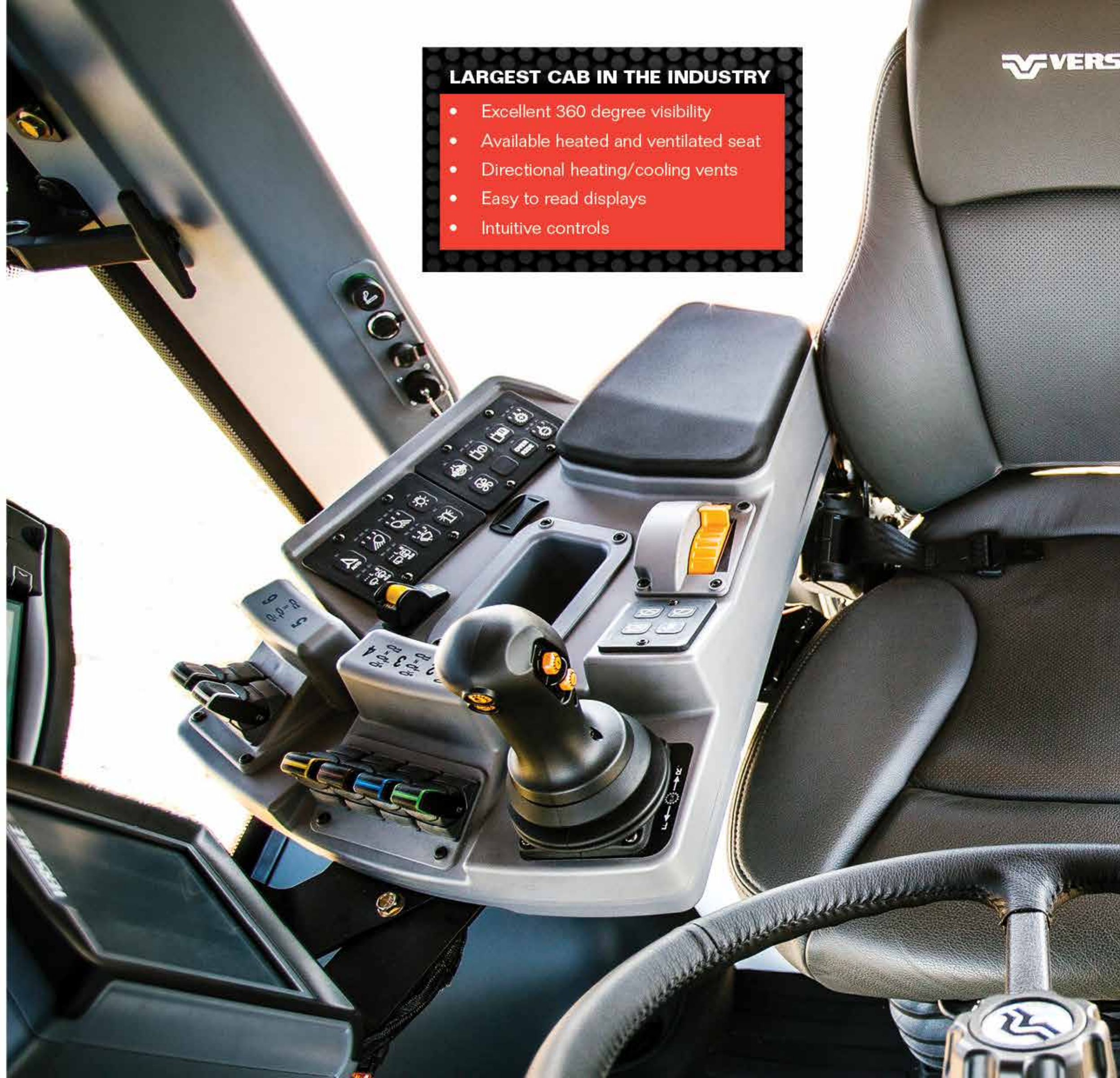
For additional safety, rotating magnetic roof-mounted beacon lights are also available (standard on Deluxe cab).



### LED LIGHTING

There are never enough hours in the day so light your way with LED. These lights provide up to ten times more light than conventional headlights.

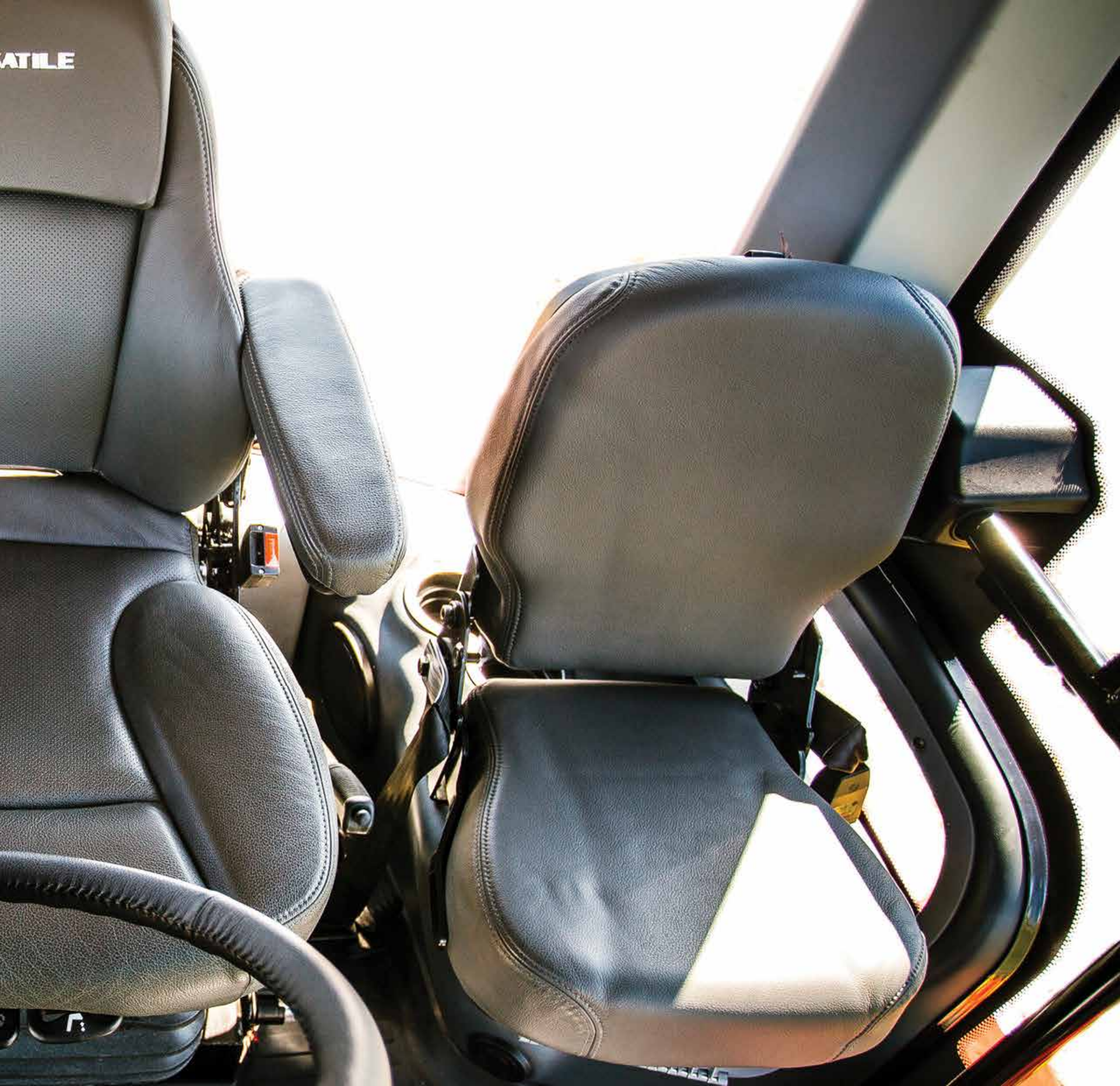
The LED light package replaces four of the standard halogen work lamps with field illuminating LED lights, one on each fender and two headlights on the grille.



### LARGEST CAB IN THE INDUSTRY

- Excellent 360 degree visibility
- Available heated and ventilated seat
- Directional heating/cooling vents
- Easy to read displays
- Intuitive controls





## **VISIBILITY**

A narrow compact front console increases forward visibility and operator comfort.

A 14% increase in glass area and improved mirror positioning give you a 360° of your field.



## **REAR VIEW**

Enjoy a clear view from the seat of your cab.

There is a clear sightline to the drawbar when attaching implements.



- 1. Programmable display monitor
- 2. Powershift transmission control lever
- 3. Headland management
- 4. Cruise control
- 5. Hand throttle control lever
- 6. Hand rest
- 7. Four standard electro-hydraulic valves
- 8. Optional six electro-hydraulic valves

- 9. Auto-steer
- 10. Front and rear wiper/washer system
- 11. Lighting package controls
- 12. Diff-lock
- 13. Reversible fan
- 14. Arm rest
- 15. Additional controls, depending on optional equipment (additional headland management, 3-point hitch control)
- 16. Storage area



## CONTROLS

Versatile tractors are designed to maintain a comfortable working environment for extended periods of time. By creating an integrated right hand control console, available with the powershift transmission, Versatile puts command of the tractor at your fingertips.

The console moves with the seat so you always have control of your equipment. The arm rest and molded hand rest provide an ergonomic solution with operating the tractor. Additional storage space is available under the arm rest.



### MONITOR

A 7" high-resolution monitor is standard with EHR controls. The monitor can be programmed to display your hydraulic settings for quick reference.

The monitor can also support up to four external cameras. The display is mounted using a shock absorbing suspension and is "sunshine-readable".



### DASH DISPLAY

A programmable center high-resolution display provides readouts on: transmission functions, engine functions, field monitoring and basic tractor functions. RPM, speed, temperature and fuel are all displayed on simple to read analog gauges.



### EHR CONTROLS

Electro-hydraulics are available in a four-valve set up and an optional six-valve configuration.



### POWERSHIFT LEVER

A four-function powershift lever gives you quick control over forward, reverse, upshift and downshift functions, eliminating the need for a clutch pedal.



### THROTTLE

A simple responsive hand throttle helps you set your RPMs where you need them for various fieldwork.

# SERVICE - SIMPLE TO DO

There are never enough hours in the day and every minute counts. That's why all Versatile tractors are designed with easy serviceability in mind. Routine service can extend the life of your tractor, minimise downtime and lower your operating costs.

## DAILY MAINTENANCE

Daily maintenance is made easy with improved access to all fill and grease points. The hydraulic and fuel sight gauges are visible from the ground without opening side panels or removing any shields. The gullwing-style side panels open wide to provide excellent service access to all under-hood components.



## AXLE SERVICING

The Versatile outboard planetary axle system is known for its ease of service. Planetary axle covers can be removed from the tractor without removing the entire undercarriage assembly, limiting the amount of time needed for routine maintenance.

## AIR CLEANER ASSEMBLY

A dry element air filter is easily accessed and removed when it needs to be replaced.

## FUELING

Refueling can easily be accomplished from either side of the tractor. A crossover tube allows both tanks to be filled quickly and with a capacity of 1800 litres you'll have many hours in the field before stopping for fuel.



The 4WD was designed using the legendary Versatile outboard planetary system. In addition to doing a better job of putting power to the ground the outboard planetary is far easier to service than competitive inboard units.

Removing the planetary cover exposes the planetary gears and sun gear for easy access.



A right hand ladder gives you access to the engine air cleaner for quick servicing. The ladder also helps with right side fueling and provides access to the egress door and folds up and out of the way when not in use.



## GRILLE ACCESS

The front grille swings open to provide ground level service access to the condenser / cooler package.

The cooler and condenser package swings open for service access. A reversible fan is optional on all models to increase efficiency and provide quick clean out.

The batteries are also located behind the grille at ground level and a shut off switch is standard for safety, winter storage and to prevent against theft.



## COMMON COMPONENTS

- The use of high quality components provide peace of mind that each system is reliable
- High quality components have been proven to last longer with less risk of failure
- Individual systems and operations mean the tractor is more serviceable, reducing downtime and repair costs

# **VERSATILE SCRAPER SPECIAL** **520-570**

## OVERVIEW

Versatile Scraper Special tractors have been designed to enhance profitability by outworking the competition. Using high quality components, they focus on power, durability and reliability - because downtime is not an option. Engineered to be heavy-duty, these Versatile tractors feature Cummins engines and industry proven CAT transmissions. Comfortable for long working days, the Versatile line of Scraper Special tractors are designed to pull more than just pans and are a valuable tool for any job site.



## FEATURES



### AUTO GREASE

This system is located on the left side of the tractor near the articulation point.

This electronically controlled unit can be set to grease in half hour intervals from 30 minutes up to five hours.



### HITCH OPTIONS

Versatile Scraper Special tractors have a variety of available hitch options to match industry standard pans.

Tractors can be ordered from factory with Miskin, Reynolds and K-Tec hitches or locally supplied with a hitch to suit your needs.



### TOW CABLE

As standard equipment a tightly braided steel tow cable is securely mounted just behind the articulation point and extends all the way to the front weight kit.

Simply unhook the cable from the weights, attach to another machine and get out of any situation with ease.

## REINFORCED STEEL AXLE TUBES AND HEAVIER DIFFERENTIALS

A scraper tractor is under heavy and variable load conditions whilst working pulling a bucket in the field. The Scraper Special has been engineered to use heavier differentials and reinforced steel axle tubes compared to the Ag versions to cope with the demands of Scraper work. All Scraper Special tractors are fitted with a Heavy duty front diff lock which can be engaged when additional traction is required turns off automatically when steering occurs at an angle of 10° to protect the driveline.







## LASER LEVEL CONTROL SYSTEM INTERFACE KIT

The laser level control system interface kit provides a simple method to permit an implement with a laser level controller to automatically control the hydraulic system on the Versatile tractor for precision levelling work.



Versatile make sure your peace of mind continues long after your warranty expires. Simply choose an AfterCare Program suited to your requirements.

## OWNERSHIP BENEFITS

Investing in equipment for your farming operation is an important decision and a long-term commitment.

## PARTS & SERVICE

Versatile dealers have access to an extensive parts supply that is well stocked with the parts for routine scheduled maintenance. Versatile maintains an extensive parts supply for tractors dating back more than 20 years.

Your Versatile dealer has factory-trained technicians that can handle everything from routine scheduled maintenance to major service and overhauls.

## WARRANTY

### Original Parts and Components - 2-year/2000 hour

All Versatile manufactured original parts and components will be repaired or replaced as covered by the warranty if they are not free from defects in materials and workmanship.

The VERSATILE brand is at the cutting edge of agricultural technology. Our goal is to supply customers with state of the art machinery that can be relied upon. This goal is carried out with determination and pride.

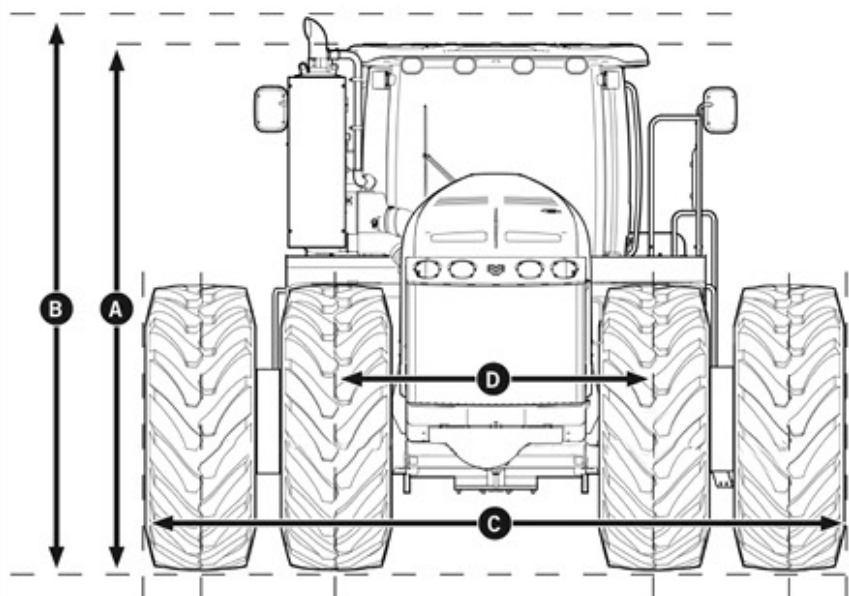
To further our aims we would like to introduce you to the VERSATILE AfterCare Program.

VERSATILE AfterCare gives you the opportunity to extend efficiency of your tractors. Aftercare is ideally suited to your needs, safeguarding your investment, providing you with maximum control over operating costs, ensuring long life for each product. You can rely on the high technical knowledge and professional support provided by the VERSATILE service network.

## WHAT ARE THE BENEFITS OF AFTERCARE?

- Protection of your investment
- Minimising downtime and increasing efficiency
- Full transparency with no excess
- Fully supported by the VERSATILE Service network
- Assurance of genuine VERSATILE Parts and Lubricants
- Enhanced value for your agricultural machinery
- Improving resale opportunities and value
- Fully transferable

## DIMENSIONS



Model	425	520/570/620	520/570/620	520/570/620	520/570/620
Tyre size	710/70R42	620/70R42	650/85R38	710/70R42	800/70R38
Height to Roof (A) mm	3693	3655	3697	3693	3697
Height to Exhaust Tip (B) mm	3891	3853	3895	3891	3895
Width (Duals) (C) mm	4650	4360	4460	4720	5118
Tread Width (Inner) (D) mm	1920	2154	2120	2166	2240
Optional 3mt Controlled Traffic Kit - Consult Dealer	•	•	•	•	•

# SPECIFICATIONS

	425	520 HHT	570 HHT	620 HHT
<b>ENGINE</b>				
Engine type	Cummins QSM11	Cummins QSX15	Cummins QSX15	Cummins QSX15
Aspiration	Turbocharged & air-to-air aftercooled	Turbocharged & air-to-air aftercooled	Turbocharged & air-to-air aftercooled	Turbocharged & air-to-air aftercooled
Displacement	11-litre	15-litre	15-litre	15-litre
Peak horsepower	425 hp (317 kW)	520 hp (389 kW)	570 hp (426 kW)	620 hp (462 kW)
Power bulge	7% @ 1800 RPM	7% @ 1800 RPM	6% @ 1800 RPM	6% @ 1800 RPM
Torque rise	35% @ 1400 RPM	35% @ 1400 RPM	30% @ 1400 RPM	30% @ 1400 RPM
Peak torque	1729 Nm	2237 Nm	2449 Nm	2542 Nm
<b>FUEL SYSTEM</b>				
Capacity	1135 L	1514 L	1514 L	1514 L
Filter	Engine mounted w/water separator	Engine mounted w/water separator	Engine mounted w/water separator	Engine mounted w/water separator
<b>TRANSMISSION</b>				
Quadshift transmission	Mechanical 12 x 4 - 35 km/hr road speed	Mechanical 12 x 4 - 35 km/hr road speed	N/A	N/A
Powershift transmission	Caterpillar 16 x 4 - 40 km/hr road speed	Caterpillar 16 x 4 - 40 km/hr road speed	Caterpillar 16 x 4 - 40 km/hr road speed	Caterpillar 16 x 4 - 40 km/hr road speed
<b>AXLES</b>				
Versatile Outboard Planetary Axles	Heavy-duty	Standard / Heavy-duty, optional	Heavy-duty	Heavy-duty
Differential Lock	Optional	Optional	Optional	Optional
Brakes	Dual dry caliper	Dual dry caliper	Dual dry caliper	Dual dry caliper
Wheelbase	3429 mm (135')	3900 mm (154")	3900 mm (154")	3900 mm (154")
<b>HYDRAULICS</b>				
Hydraulic type	Closed Center Load Sensing System	Closed Center Load Sensing System	Closed Center Load Sensing System	Closed Center Load Sensing System
Standard flow	208 L/min	208 L/min	208 L/min	208 L/min
High Flow hydraulic system	416 L/min	416 L/min	416 L/min	416 L/min
Hydraulic remotes	4 standard, 6 optional	4 standard, 6 optional	4 standard, 6 optional	4 standard, 6 optional
Maximum system pressure	200 bar (2900 PSI)	200 bar (2900 PSI)	200 bar (2900 PSI)	200 bar (2900 PSI)
<b>ELECTRICAL SYSTEM</b>				
Alternator	12V - 200 amps	12V - 200 amps	12V - 200 amps	12V - 200 amps
Batteries	3-12V, 950 CCA ea.	3-12V, 950 CCA ea.	3-12V, 950 CCA ea.	3-12V, 950 CCA ea.
LED lighting / Power mirrors	Optional / Optional	Optional / Optional	Optional / Optional	Optional / Optional
Battery shut-off switch	Standard	Standard	Standard	Standard
<b>DRAWBAR</b>				
Vertical load rating	2,722 kg	4,082 kg	4,082 kg	4,082 kg
Vertical load rating w/heavy-duty drawbar support, option	4,082 kg	5,443 kg	5,443 kg	5,443 kg
Hitch pin diameter (w/auto drop)	51 mm (2")	51 mm (2")	51 mm (2")	51 mm (2")
3-point hitch, option	Category III/IVN	Category IV	Category IV	Category IV
PTO, option	1000 RPM, 44 mm (1-3/4") shaft	1000 RPM, 44 mm (1-3/4") shaft	1000 RPM, 44 mm (1-3/4") shaft	1000 RPM, 44 mm (1-3/4") shaft
<b>CAB</b>				
Volume	4.97 cu. m (175.5 cu. ft.)	4.97 cu. m (175.5 cu. ft.)	4.97 cu. m (175.5 cu. ft.)	4.97 cu. m (175.5 cu. ft.)
Glass	7.98 sq. m (85.9 sq. ft.)	7.98 sq. m (85.9 sq. ft.)	7.98 sq. m (85.9 sq. ft.)	7.98 sq. m (85.9 sq. ft.)
<b>WEIGHTS</b>				
Base tractor weight*	14,288 kg	19,050 kg	19,050 kg	19,050 kg
Recommended maximum operating weight	17,010 kg	23,587 kg	24,948 kg	27,669 kg
<b>SCRAPER SPECIAL MODELS AVAILABLE •</b>				

\*A base tractor is considered to have a mechanical transmission, with 710/70R38 drum-style duals, a standard drawbar, no fuel, no operator, no special added equipment and no ballast.

**15%**  
**MORE DRAWBAR  
PULL WHERE IT  
MATTERS.**

## **THE REASONS WHY**

**Simple to operate, easy to service and maintain**

**Highly efficient and robust drawbar pull**

**Cummins engine, CAT transmission**

**Largest cab in the industry**

**Heavy-duty frame**



Illustrations, photographs and specifications in this brochure are based on the latest information at the time of publication. Design and specification of equipment is subject to change without notice; please contact your local dealer for product information and availability. Products produced by other manufacturers featured in photography are not endorsed by Buhler Versatile Inc. and are intended for image reference only.